



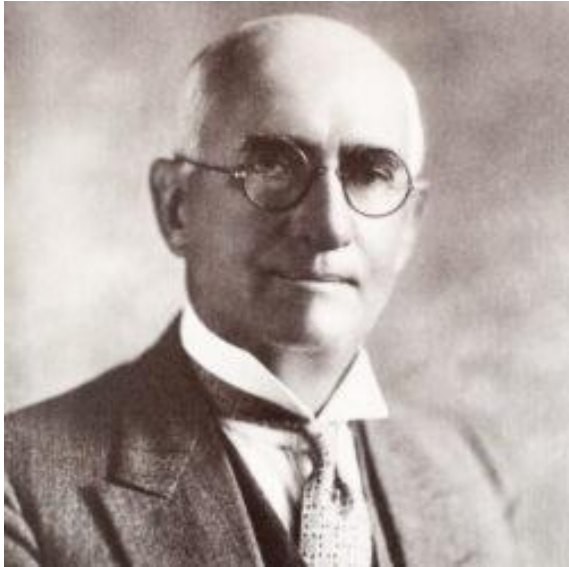
# Hines' Lines

SEPTEMBER 5 - 27, 2025

*Hines' Lines* seeks artworks inspired by American road pioneer Edward N. Hines and complements the *Northville Victorian Festival*, a celebration of the Northville's history and charm, typically held in September.

## INTRODUCTION

**Edward N. Hines** (1870–1938), originally an owner of a printing business in Detroit, Michigan, became a pioneering American figure in road development.



Hines was instrumental in the development of modern road infrastructure, advocating for better road maintenance and tree-lined parkways. His concept of painting a centerline on roads, first implemented in 1911, became a standard practice worldwide, significantly reducing head-on collisions and improving traffic organization. His efforts also helped establish Wayne County's extensive parkway system, including the road that now runs through Hines Park from Dearborn to Northville. As the chairman of the board for the Wayne County Board of Roads he championed the first full mile of concrete road in the world — a section of Woodward Avenue between Six Mile Road and Seven Mile Road. Running from Detroit River to Pontiac, Woodward Avenue is a significant thoroughfare in the Metro Detroit area, with sports complexes, cultural institutions, and historic landmarks lining the route. Hines was posthumously inducted into the Michigan Transportation Hall of Honor in 1972.

## ELIGIBILITY, CRITERIA, & ENTRY

Artists, 18 and over, in the continental U.S may submit a maximum of 3 original works of art created in any media\* and style within the last 5 years, and not previously exhibited at the Northville Art House. The maximum size, including any frame is 60" in any direction. \*Plein-air, studio, current and historic imagery, and more accepted. **No reproductions, film, video, electronic, or AI created artwork.**

Following Hines' contributions, artwork for this exhibition **must include at least one of the following criteria:**

1. a white or yellow line with a length of 50% of either the width or height of the surface;
2. capture the parks, waterways, and tree-lined landscape along the 17.5-mile-long Edward N. Hines Drive;
3. or capture the architecture, landmarks, and pedestrians along 21.5-mile-long Woodward Avenue.

For artwork examples, please see links on page 2.

The exhibition will be juried only for space with at least one submission from each artist accepted. Non-monetary prizes will be awarded at the **opening reception on Friday, September 5, 5 – 8 pm**, determined by the Northville Art House Exhibition Committee, and at the end of the exhibition, determined by public support through *People's Choice Awards*.

**Enter by Monday, July 21 at 11:59 PM EST at [www.northvillearthouse.org/hines-lines/](http://www.northvillearthouse.org/hines-lines/).**

**\$10 per entry for members and \$15 per entry for non-members.** Payment due before submissions.

Questions? Email Ryan Kaltenbach, Creative Director, [exhibits@northvillearthouse.org](mailto:exhibits@northvillearthouse.org).



# Hines' Lines

SEPTEMBER 5 - 27, 2025

## ARTWORK EXAMPLES (Follow Links)

### White or Yellow Lines:

- [Wassily Kandinsky, \*White Line\*](#)
- [Piet Mondrian, \*New York City\*](#)
- [Tyler Foust, \*Golden Wave\* \(one-line drawing\)](#)
- [Blanche Lazzell, \*Provincetown Back Yards\*](#)

### Edwards N. Hines Drive and Woodward Avenue:

- [Edwards N. Hines Drive](#)
- [Life and Parks along Hines Drive](#)
- [Historic Woodward Avenue](#)
- [Woodward Avenue Tour](#)

## ADDITIONAL INFORMATION

**Gallery Hours & Admission:** Tuesday - Thursday 10 am - 5 pm & Friday - Saturday 11 – 3 pm. Free admission.

**Reception:** Friday, September 5, 5 – 8 pm with Gallery Presentation at 6:00 pm.

**Notification of Acceptance:** Artists will be notified by email on **Tuesday, August 5 by 5 pm.**

**Delivery:** Artwork drop-off time is **Sunday, August 24** and **Monday, August 25, 12 – 2 pm.**

**Shipments:** Shipped artwork should arrive on or before **Monday, August 25** during the hours of Monday – Friday, 10 am – 3:00 pm with a required pre-paid return label and any special installation instructions. Send tracking number to [exhibits@northvillearthouse.org](mailto:exhibits@northvillearthouse.org).

**Artwork:** All costs, including packing, shipping, and liability for damage, are the artist's responsibility. Artwork must be in excellent condition, ready for secure installation before delivery.

Works on paper must be framed. All 2D work should be ready for hanging with hooks and a wire. Sawtooth hangers are not recommended. All 3D work must be free standing, stand on a pedestal, or hang with wire or rod. *If different, submit alternatives for consideration to [exhibits@northvillearthouse.org](mailto:exhibits@northvillearthouse.org).*

**Sales:** The Art House handles the transactions with a 35% commission on art. Art is preferred to be for sale.

**People's Choice Awards:** Patrons make selections through an online form from September 5 – 27 with the top 5 recognized artworks receiving 6-month membership rewards. Winners announced on September 28.

**Pick-Up:** Artwork may be picked-up on Sunday, September 28 and Monday, September 29, 12 – 2 pm, and after during gallery hours. Artists may authorize a representative to pick-up art. Work not picked up after 30 days will be considered abandoned and become the Art House property.

**Return Shipment:** Art will be packed in the same or similar materials and shipped by **Tuesday, September 30.**

**Terms and Conditions:** Submissions to the exhibition shall constitute an agreement to comply with terms and conditions set forth in the call for entries, entry form and in the [Art Exhibition and Sales Agreement](#).

**Questions?** Email Ryan Kaltenbach, Creative Director, [exhibits@northvillearthouse.org](mailto:exhibits@northvillearthouse.org).